



**293 South Beach Road**

**JOAN THOMSON AND PAUL CHRISTOPHER**  
*JUPITER ISLAND SPECIALISTS*

**WATERFRONT  
PROPERTIES**  
*& Club Communities*

EFTA\_R1\_01521424

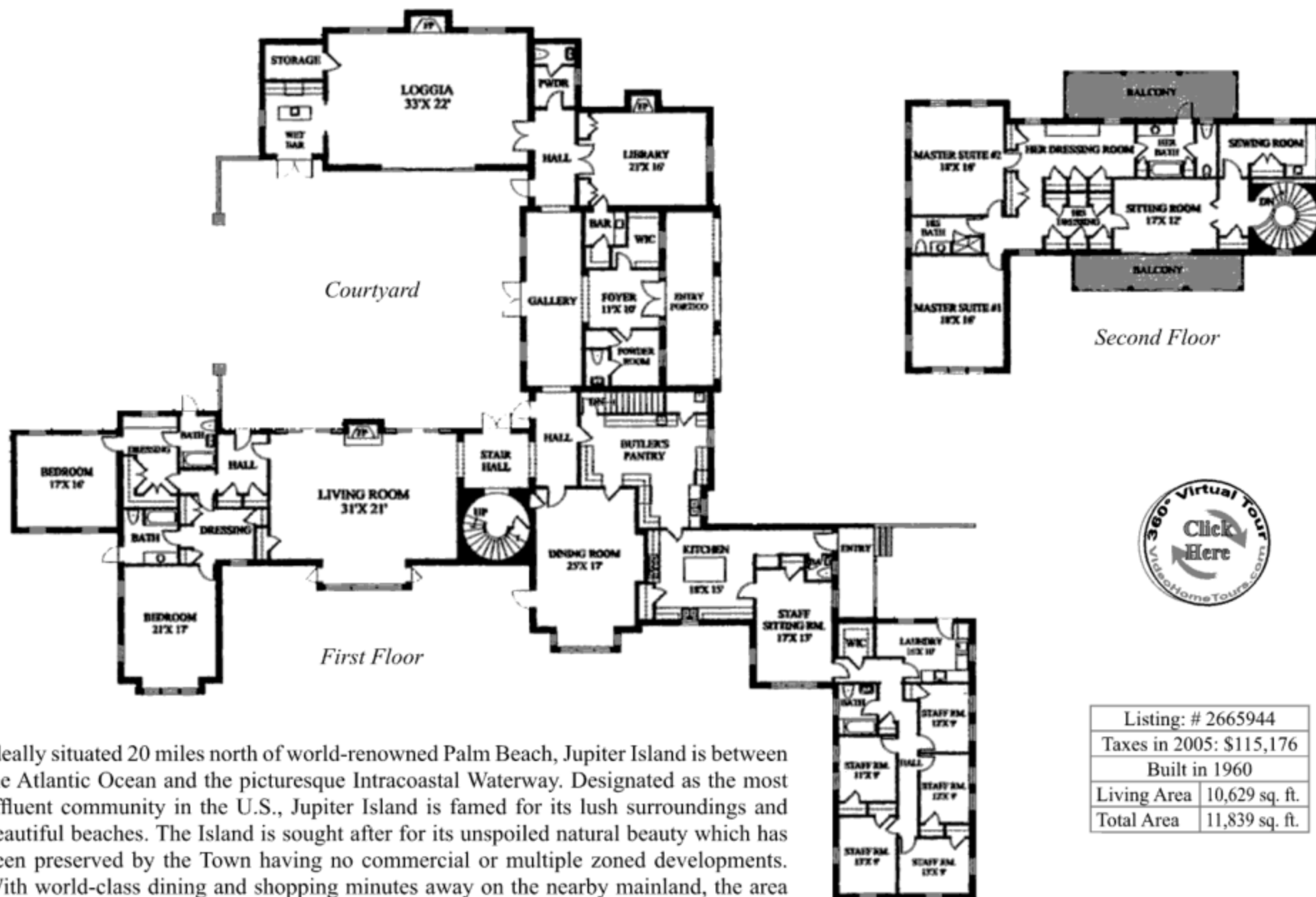
EFTA02444518

## 293 SOUTH BEACH ROAD • JUPITER ISLAND

Ideally situated 20 miles north of world-renowned Palm Beach, Jupiter Island is between the Atlantic Ocean and the picturesque Intracoastal Waterway. Designated as the most affluent community in the U.S., Jupiter Island is famed for its lush surroundings and beautiful beaches. The Island is sought after for its unspoiled natural beauty which has been preserved by the Town having no commercial or multiple zoned developments. With world-class dining and shopping minutes away on the nearby mainland, the area is easily accessible by I-95. Palm Beach International Airport is only 30 minutes away. The Ft. Lauderdale and Miami airports are also within an easy 1-2 hour drive. There are numerous area recreational and cultural facilities for golf, sailing, fishing and tennis nearby.



## 293 SOUTH BEACH ROAD • JUPITER ISLAND



Ideally situated 20 miles north of world-renowned Palm Beach, Jupiter Island is between the Atlantic Ocean and the picturesque Intracoastal Waterway. Designated as the most affluent community in the U.S., Jupiter Island is famed for its lush surroundings and beautiful beaches. The Island is sought after for its unspoiled natural beauty which has been preserved by the Town having no commercial or multiple zoned developments. With world-class dining and shopping minutes away on the nearby mainland, the area is easily accessible by I-95. Palm Beach International Airport is only 30 minutes away. The Ft. Lauderdale and Miami airports are also within an easy 1-2 hour drive. There are numerous area recreational and cultural facilities for golf, sailing, fishing and tennis nearby.

Listing: # 2665944	
Taxes in 2005: \$115,176	
Built in 1960	
Living Area	10,629 sq. ft.
Total Area	11,839 sq. ft.

**293 SOUTH BEACH ROAD • JUPITER ISLAND**



This classic mid-island estate designed by famed architect John Volk boasts a large entrance gallery, spacious rooms, high ceilings, separate guest house and a large pool. Built in the 60's, the estate is located on 2.54± acres with 308' of frontage on the Atlantic Ocean and is such a substantial home that it is worthy of restoration. Some of the materials in this home are not easily found and therefore are sought after by estate builders. Restoring and renovating this estate home would provide a new owner with one of the finest estate homes on one of the most spectacular oceanfront settings Jupiter Island has to offer.

**Bedrooms:** 4 (other portions of the house could easily become additional bedrooms)

**Baths:** 8 full, 3 half baths

**Entrance:** Double wooden door entry

**Foyer:** Marble floors, tray ceiling, crown molding

**Living Room:** Volume ceiling, fireplace with decorative mantle, wooden floors & ocean views

**Dining Room:** Located off kitchen, formal, wooden floors, volume tray ceiling, decorative moldings around doors, crown molding and ocean views

**Library:** Volume ceiling with decorative moldings, wood paneling on walls, wooden floors, custom built-ins, fireplace framed with marble then decorative wooden mantle

**Kitchen:** Very large with separate preparation and cooking areas

**Master Suite:** Sitting area with private balcony and ocean views, wooden floors, tray ceilings, crown moldings and his & hers closets

**Master Bath:** Separate his & hers baths

**Guest Rooms:** 2 guest suites, each with walk-in closets and own bathrooms, volume ceilings with crown moldings and spectacular ocean views

**Other Features:** Large basement useable for storage, a wonderful courtyard for entertaining and a detached guest house with a living room, kitchen, bedroom and bathroom

**Pool:** Large pool and pool area with two changing cabanas, located on south side of home for maximum exposure

**Driveway:** Private

**Garage:** 3-car detached

**Landscaping:** Lushly landscaped for privacy



**Joan Thomson**  
**Paul Christopher**

*Jupiter Island Specialists*

Office: (561) 746-7272

Joan Direct: (561) 346-2934

Paul Direct: (561) 379-8408

Web: [www.waterfront-properties.com](http://www.waterfront-properties.com) E-mail: [jthomson@waterfront-properties.com](mailto:jthomson@waterfront-properties.com)

**Waterfront Properties<sup>SM</sup>**  
*and Club Communities*

825 Parkway Plaza, Suite 8, Jupiter, FL. 33477

exclusive affiliate of  
**LEADING ESTATES**  
OF THE WORLD.COM

exclusive affiliate of  
**Brokers of BIRDS & BEES<sup>SM</sup>**  
IN REAL ESTATE  
LTS. REGISTRATION 2004

**Financing Available Through**  
Palm Beach Financial Network  
(561) 745-1504

**Insurance Available Through**  
1<sup>st</sup> Florida Insurance Group  
(561) 743-5688

**Title Policy Available Through**  
Broker's Foundation Title Fund  
(561) 691-0114

The principals of Waterfront Properties & Club Communities have ownership interests in PBFIN & Broker's Foundation Title Fund. All measurements are approximate. Note: No warranty or representation, expressed or implied is made as to the accuracy of the information contained herein, and same is submitted subject to errors, omissions, change in price, rental or other conditions, prior sale, withdrawal without a notice, and to any special listing conditions imposed by the owner.



Member of WHO'S WHO IN  
LUXURY REAL ESTATE®  
LUXURYREALESTATE.COM™

**Waterfront Properties**<sup>SM</sup>  
*And Club Communities*

exclusive affiliate of  
**LEADING ESTATES**  
OF THE WORLD.COM

EFTA\_R1\_01521429  
EFTA02444523