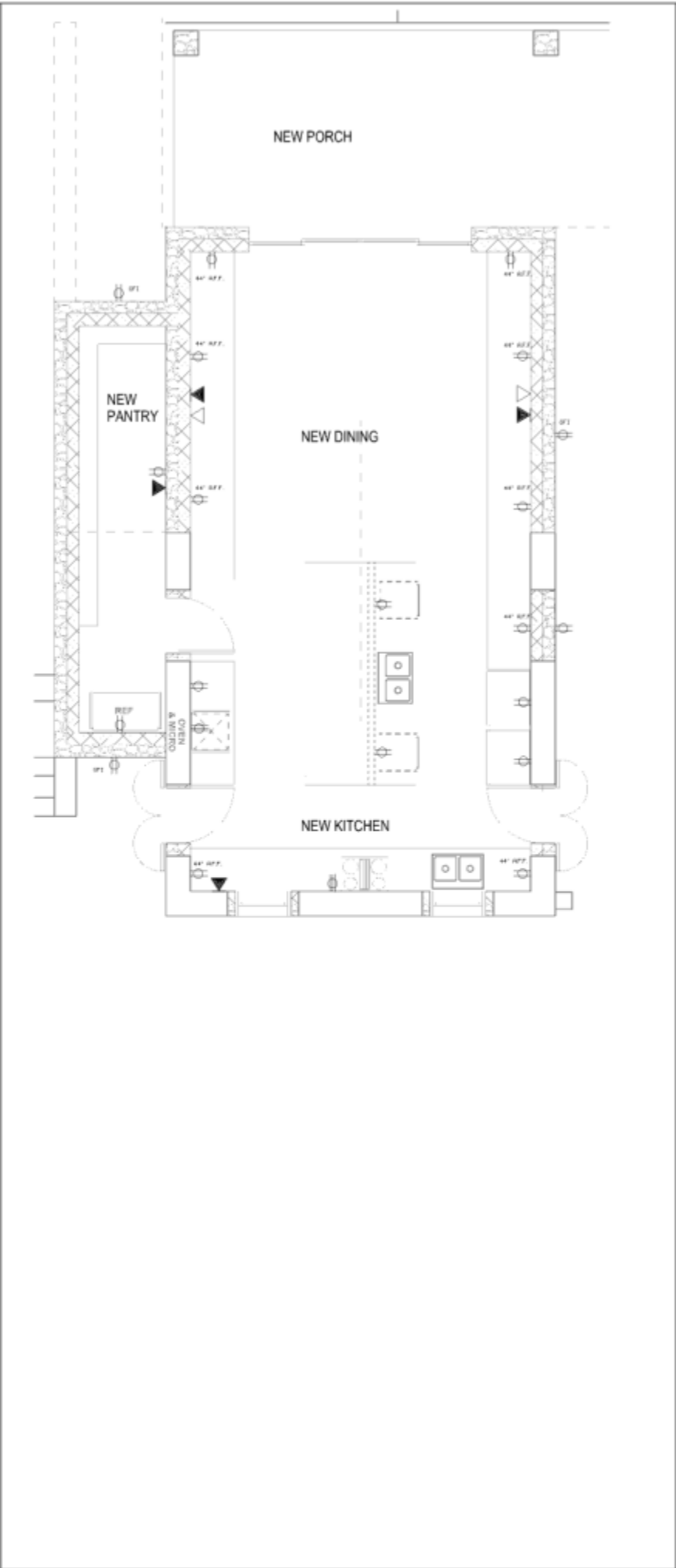


1 PROPOSED POWER LAYOUT
E1.01 SCALE: 1/4" = 1'-0"



2 PROPOSED LIGHTING LAYOUT
E1.01 SCALE: 1/4" = 1'-0"

GENERAL ELECTRICAL NOTES:

- A. ALL ELECTRICAL WORK SHALL BE COMPLETED IN STRICT ACCORDANCE WITH THE LATEST EDITION OF THE N.E.C.
- B. THE ELECTRICIAN SHALL OBTAIN ALL PERMITS AND PAY ALL FEES RELATED TO HIS WORK.
- C. ALL WIRING SHALL BE COPPER #12 OR LARGER. ALUMINUM WIRE IS NOT ACCEPTABLE.
- D. WIRE TYPE RMG IS PREFERRED, ALTHOUGH OTHERS ARE ACCEPTABLE.
- E. ALL WIRING SPLICES SHALL BE MADE USING 3M ELECTRICAL SPRING CONNECTORS OR EQUAL "TWIST-ONS" TO CORRECT SIZE. WIRE TAPED OR TWISTED IS NOT ACCEPTABLE.
- F. ALL CONDUITS INSTALLED IN CONCRETE OR MASONRY SHALL BE RIGID NON-METALLIC TYPE (P.V.C.). ALL OUTLETS AND SWITCH BOXES SHALL BE NON-METALLIC TYPE.
- G. GROUNDING CONDUCTORS SHALL BE CONNECTED TO NEUTRAL CONDUCTORS AT THE SERVICE ENTRANCE ONLY. CERTAIN EXCEPTIONS AS PERMITTED BY THE N.E.C. SHALL BE PERMITTED.
- H. ELECTRICAL SERVICE SHALL BE 120-240 VOLTS, SINGLE PHASE, 60 CYCLES, 3 WIRE CONNECTION. SERVICE SHALL BEGIN AT POINT OF ATTACHMENTS OF OVERHEAD SERVICE DROP CABLE.
- I. ELECTRICAL SYSTEM LAYOUT INDICATED ON DRAWINGS ARE GENERALLY DIAGRAMMATIC AND LOCATION OF OUTLETS AND EQUIPMENT ARE APPROXIMATE; ROUTING OF RACEWAYS AND LOCATION OF OUTLETS AND EQUIPMENT SHALL BE GOVERNED BY STRUCTURAL CONDITIONS AND OBSTRUCTIONS.

ELECTRICAL LEGEND

- CEILING MOUNTED LIGHT
- DUPLEX RECEPTACLE OUTLET
- SMOKE DETECTOR (HARD WIRE TO PANEL BOX)
- EXTERIOR WEATHER PROOF LIGHTING
- RANGE OUTLET
- THREE-WAY SWITCH
- SINGLE POLE SWITCH
- A.F.F. ABOVE FINISH FLOOR
- TELEPHONE OUTLET
- CABLE OUTLET
- ELECTRICAL PANEL BOX
- GFI GROUND FAULT INTERRUPTER
- SWITCH TO LIGHT CIRCUIT

3 LEGEND AND NOTES
E1.01 SCALE: 1/4" = 1'-0"

KITCHEN
RENOVATION
LITTLE ST. JAMES
U.S. VIRGIN ISLANDS

LIGHTING, POWER LAYOUT,
LEGEND AND NOTES

REVISIONS	

DRAWN BY:	O.C.
CHECKED BY:	deJONGH
SCALE:	1/4" = 1'-0"
DATE:	
JOB NO:	2008.21
SHEET:	

E1.01