



**ALLENBY & ASSOCIATES**

<http://allenbyyachtsales.com>

Clifford Allenby  
1205 S.E. 11th ct

Ft. Lauderdale, FL 33316 United States

**Toll-free (888) 511-8863**

Tel 954-647-5055

Tel 954-522-8123

Fax 954-522-0677

Other 954-647-5055 Cellular

Email [callenby@allenbyyachts.com](mailto:callenby@allenbyyachts.com)

---

### **38' Down East Chesapeake Lobster Down East**



- Year: 2005
- **Current Price: US\$ 84,900 (06/15)**
- Located in Oceanport, NJ
- Hull Material: Fiberglass
- Engine/Fuel Type: Single diesel
- YW# 65471-2767546

Wow is what every says that sees her, My pictures do not do her justice, This is a Classic Jimmy Drewery Chesapeake Deadrise, she is a so cool, sips fuel at 18 knots, Only 722 original hours on Single Cat diesel because she was never commercially fished, Great little cabin forward to get out of the weather and stow your gear, Cabin has a Bus heater that gets her toasty in minutes, cockpit is so big you could put 15 guys out there and not be on top of each other. Her keel will keep her stable while you fish no rock n roll here, she would make an amazing charter vessel or Personal Fishing boat. Take all your friends even the ones you don't really like! Cockpit Helm Station has trolling Valve, what a difference that makes, you will catch twice as many fish if you slow her troll down. She is a classic that was one of 17 boats built in a Museum, Fighting Lady Yellow Hull, She could be the last boat you ever buy. These boats lasted a very long time. The engine with only 722 hours and rated at only 385 hp will last for 7 or 8 thousand hours if taken care of. Don't miss her man she will turn heads and raise fish everywhere she goes,

Please Please Please only pursue her if you are super serious about buying her she is priced below wholesale, no time for lookie lookie non sense

>survey the boat to protect yourself make sure the engines are ok, the Hull, all major components, we will not address some made up petty list your surveyor makes up to justify his bill, this boat is solid as a rock as clean as it gets and priced below wholesale.

**Price is Super Firm, NO Exceptions**

**Clean Late Model Trades Accepted**

**We can coordinate inspections, transport, loan if you want one all we ask is that you are really serious and ready to make the purchase no lookie lookie non sense this is not RETAIL**

## **Additional Specs, Equipment and Information:**

### **Dimensions**

LOA: 38 feet

Beam: 12.75 feet

### **Engines**

Engine Power: 385 HP

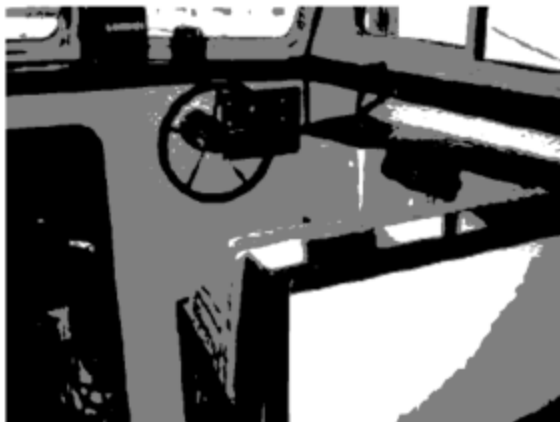
Cruising Speed: 18 knots

Maximum Speed: 21 knots

### **Disclaimer**

The Company offers the details of this vessel in good faith but cannot guarantee or warrant the accuracy of this information nor warrant the condition of the vessel. A buyer should instruct his agents, or his surveyors, to investigate such details as the buyer desires validated. This vessel is offered subject to prior sale, price change, or withdrawal without notice.

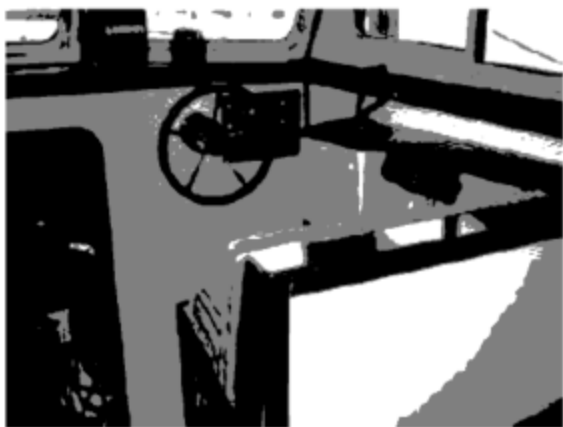
*Last Revised: Jul 20, 2015*



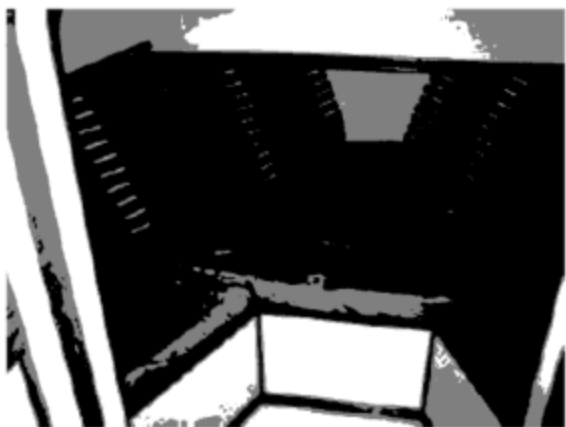
> helm



> Cat Diesel



> helm



> Vee Birth



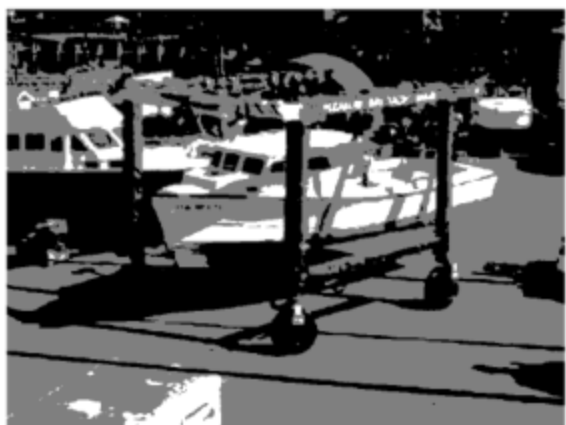
> Cockpit Helm Station



> Dinette



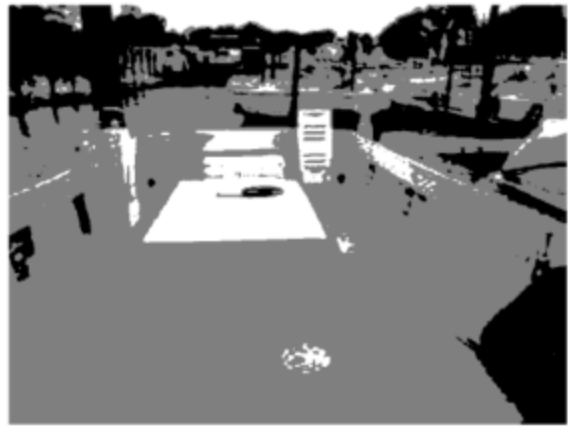
> bow



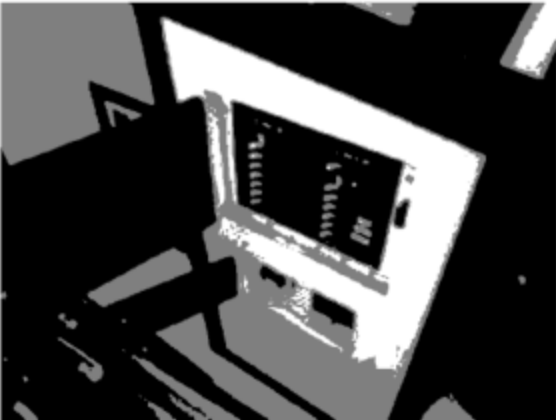
> In Travel Lift



> cabin



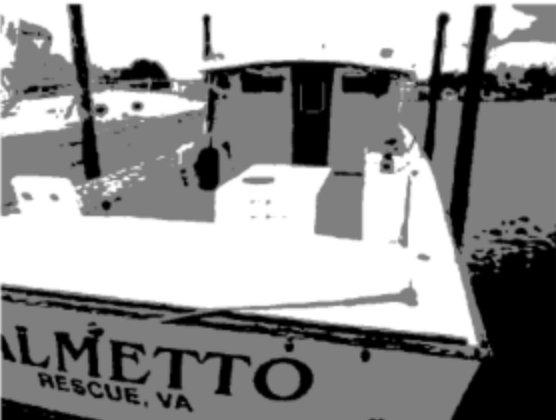
> looking aft



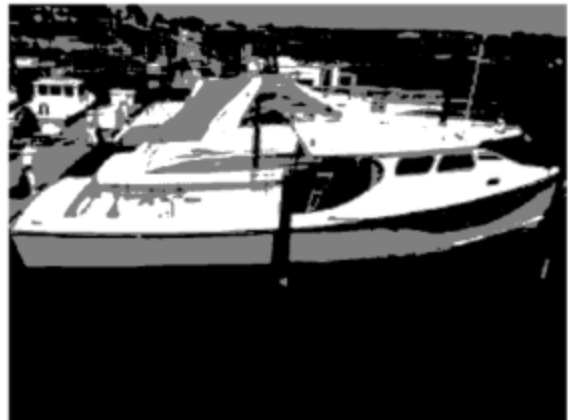
> panel



> new garmin gps



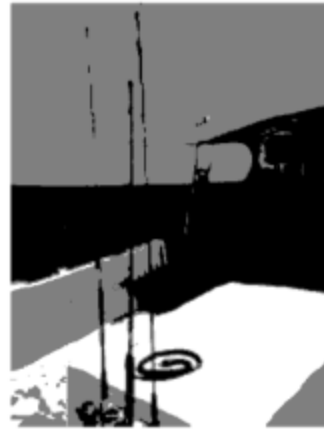
> stern view



> Starboard Profile



> chillin ha



> where she bvelongs



> In Slip



> July 20 2015 haul out



> July 20 2015 haul out